

BOS Support for Assessors & Local Government

Update on the revised Eastern NSW Plant Community Type Classification and State Vegetation Type maps

Wednesday 8th September 2021, 1:30 PM – 2:30 PM



Ron Avery

Senior Team Leader, Biodiversity Information Systems,
Department of Planning, Industry & Environment



Overview

1. Introduction
2. Time-table for data release.
3. Integrated BioNet Vegetation Data
4. Pre-release data packages, access and conditions
5. Staying informed
6. Feedback

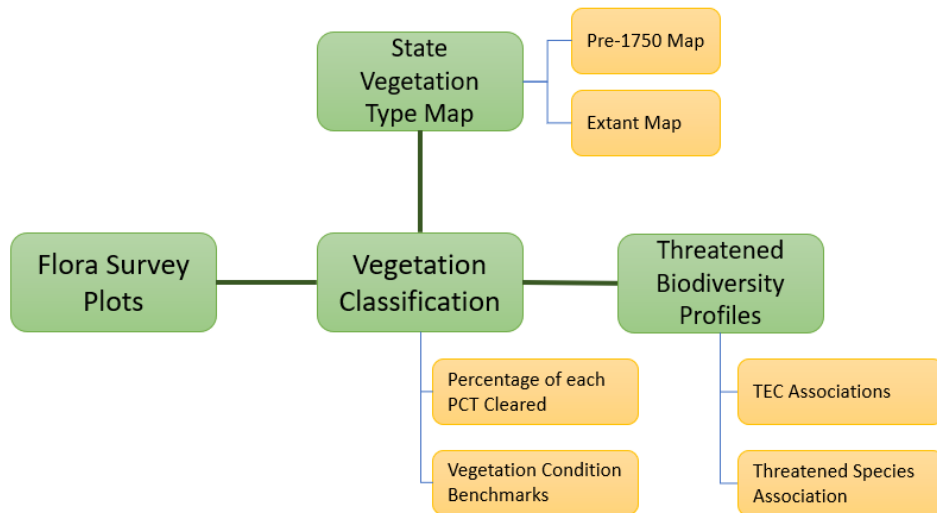
Introduction

- The Integrated BioNet Vegetation Data (IBVD) release represents a significant improvement in foundation information available for eastern NSW
- IBVD seeks to standardise the classification and mapping of vegetation communities in NSW as a basis for effective planning
- The full public release of the final IBVD package, previously communicated as 15 Sept 2021, has been delayed and is now expected to be released in early 2022.
- We apologise for the delay and inconvenience. The delay is required to allow additional peer review and data quality checks to be undertaken on the Pre-1750 PCT map and derived PCT % Cleared data.
- **Pre-release IBVD data** including new eastern NSW PCT Classification and State Vegetation Type Map will be available from **15 September 2021**

Time-table for data product release

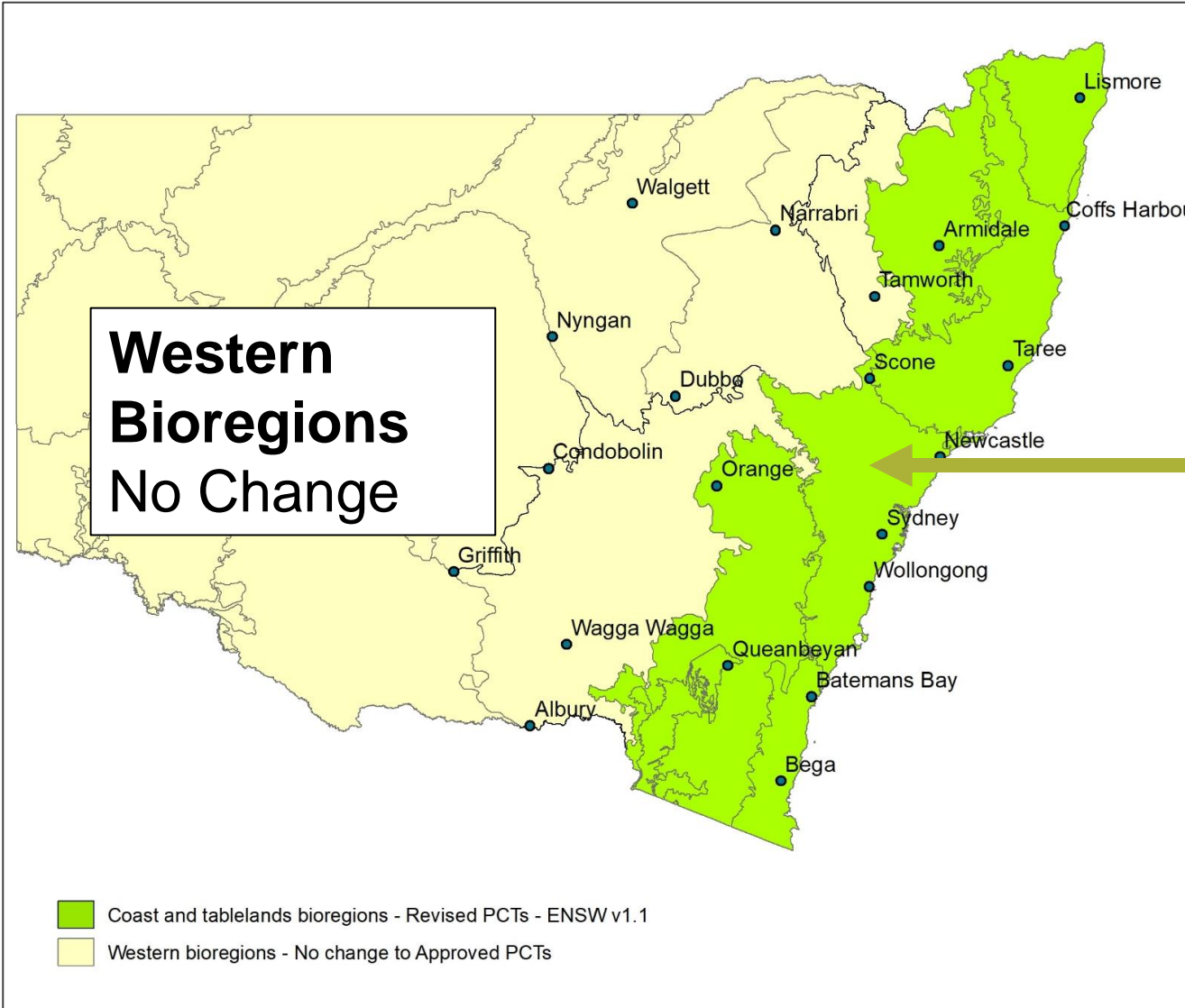
Item	Time-Frame	Detail
IBVD Pre-release	15 September 2021	<ul style="list-style-type: none"> - Selected products - Focus on eastern NSW products - Under license - Zipped data packages on request
Full IBVD data release	Early 2022 (Q1)	<ul style="list-style-type: none"> - All products - Open - Full production delivery via SEED & BioNet
Upload to BOS and BAM-C	4-6months after Full IBVD data release	

Integrated BioNet Vegetation Data



Foundation Information

- Logically related data
- Data Standards
- Data Dictionary
- Coordinated Maintenance
- Support Resources



Coast and Tablelands Bioregions

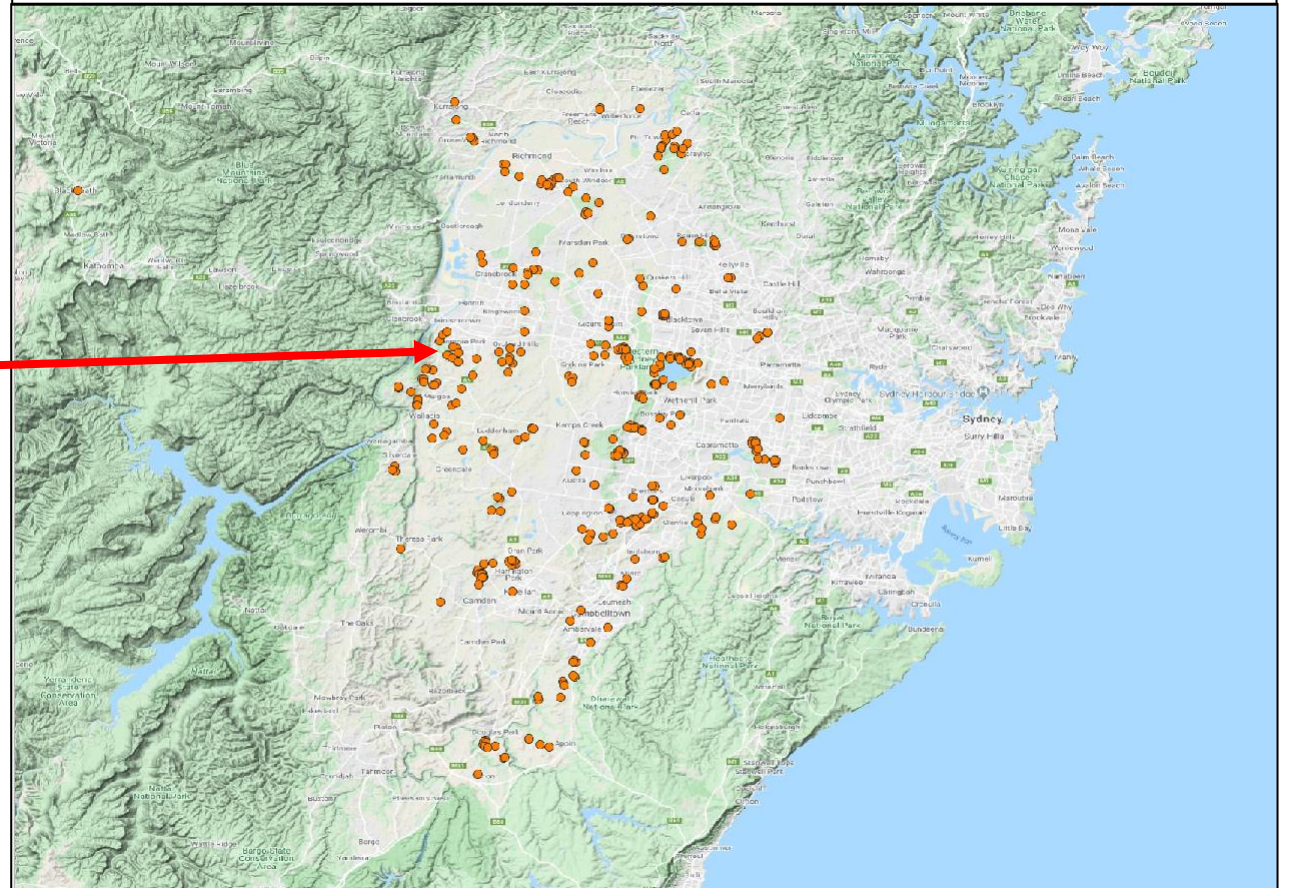
~~Current PCTs: 948~~

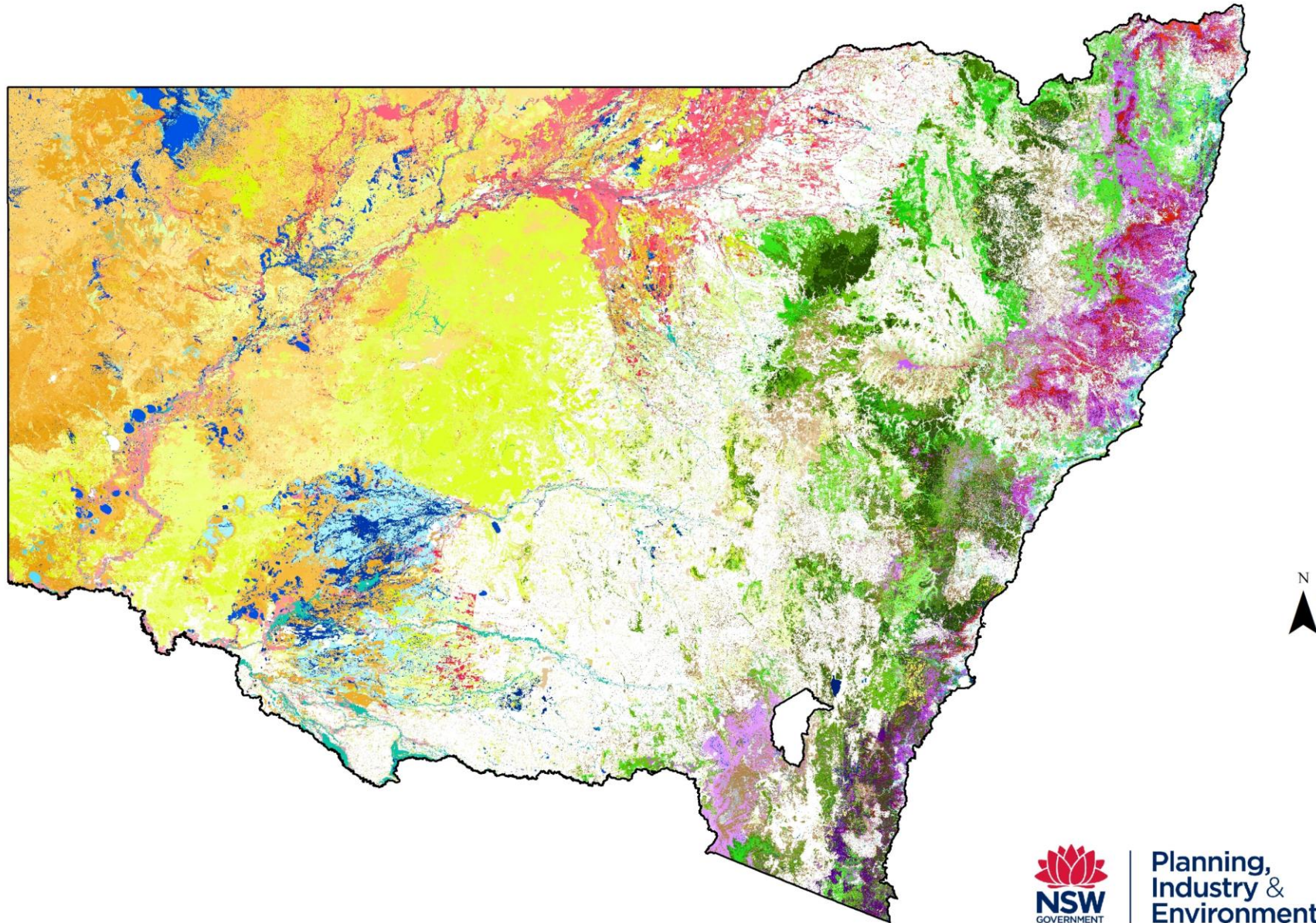
New PCTs: 1072

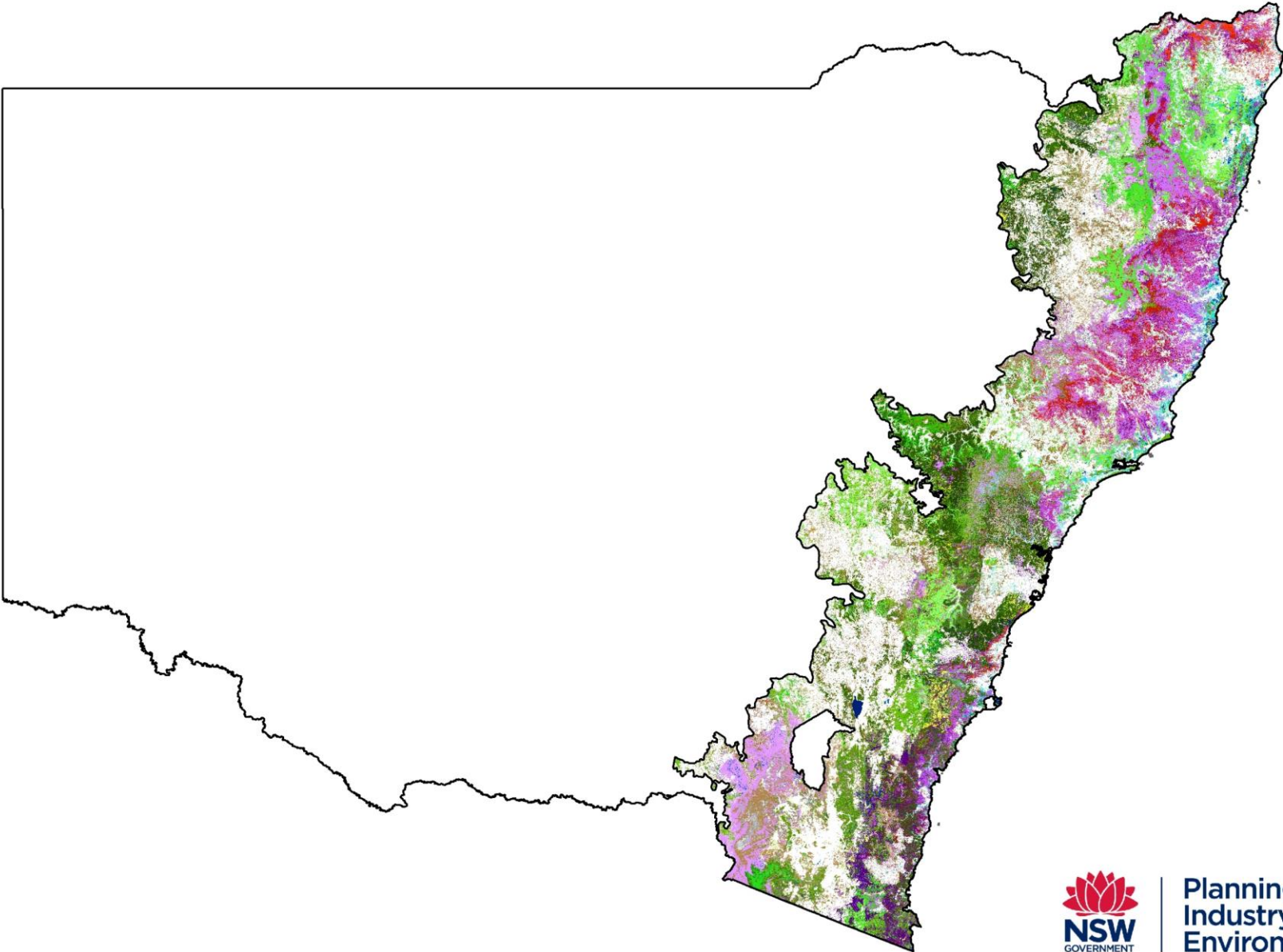
New PCT Features

- Completely revised descriptions
- Comprehensive plant species inventories x BAM Growth Form, species frequency and cover
- Reference plot locations in BioNet
- New PCT species richness metrics
- New PCT Numbers
- Simplified PCT Names
- Updated distribution fields
- Comprehensive revision of NSW and Commonwealth TEC Associations

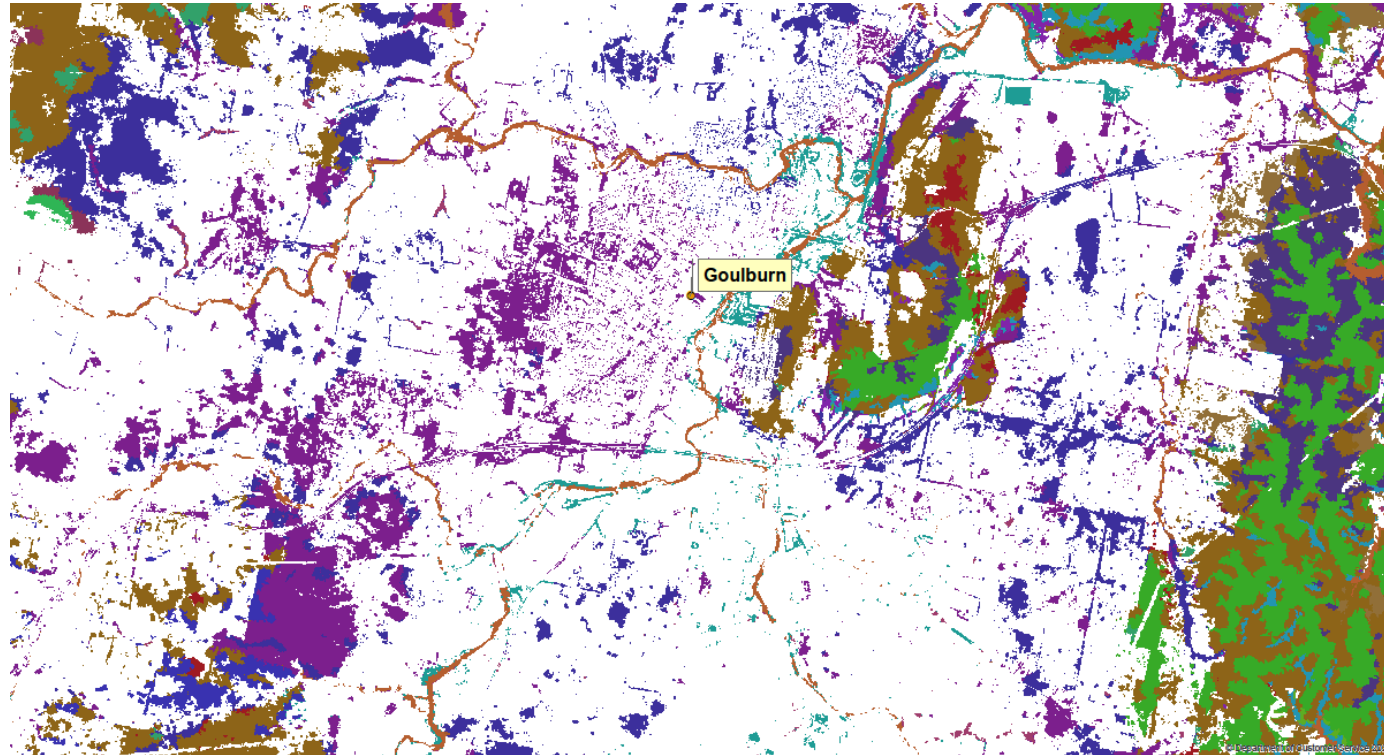
PCT 3320 Cumberland Shale Plains Woodland



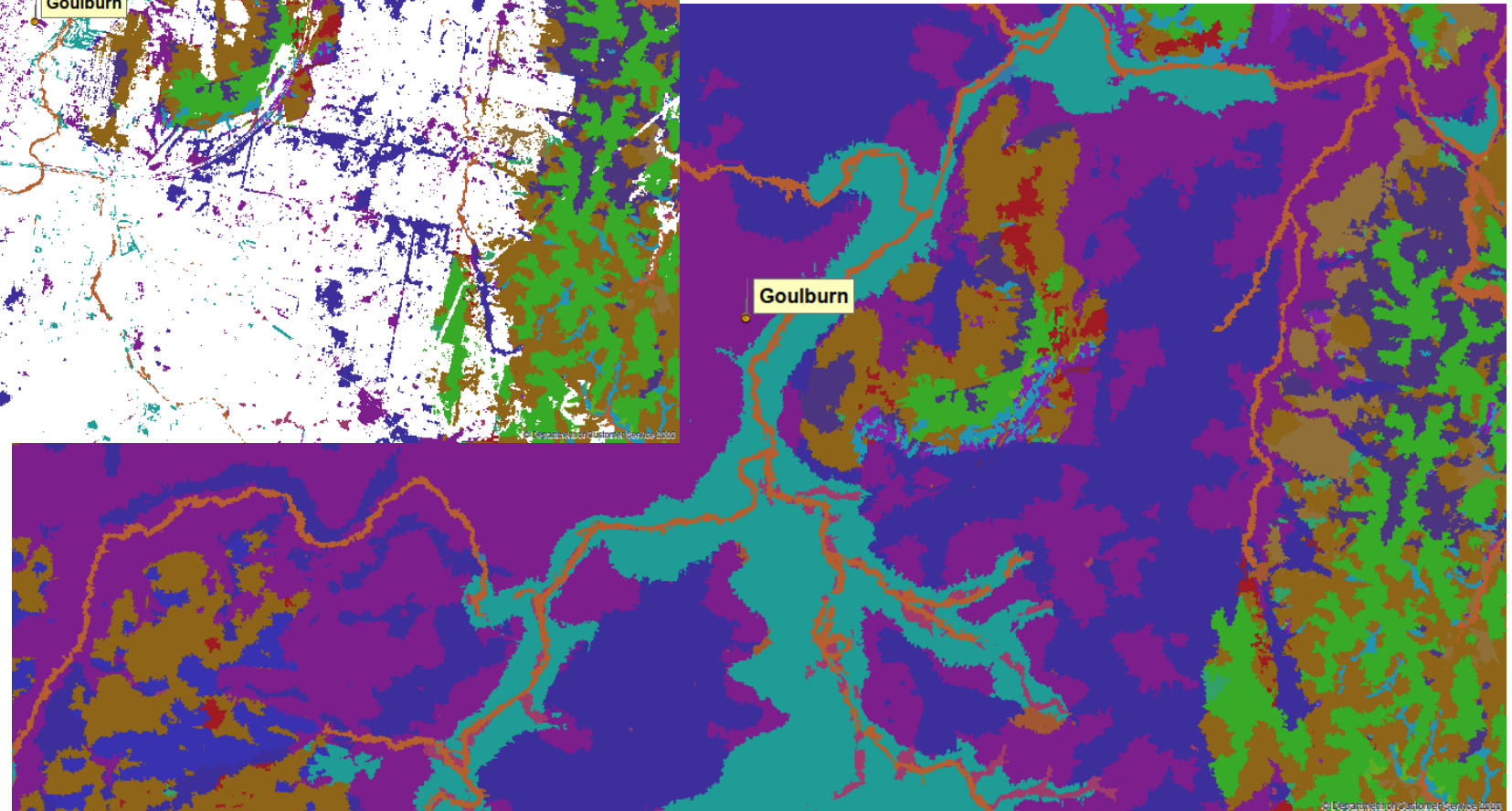




Planning,
Industry &
Environment



Pre-European Extent

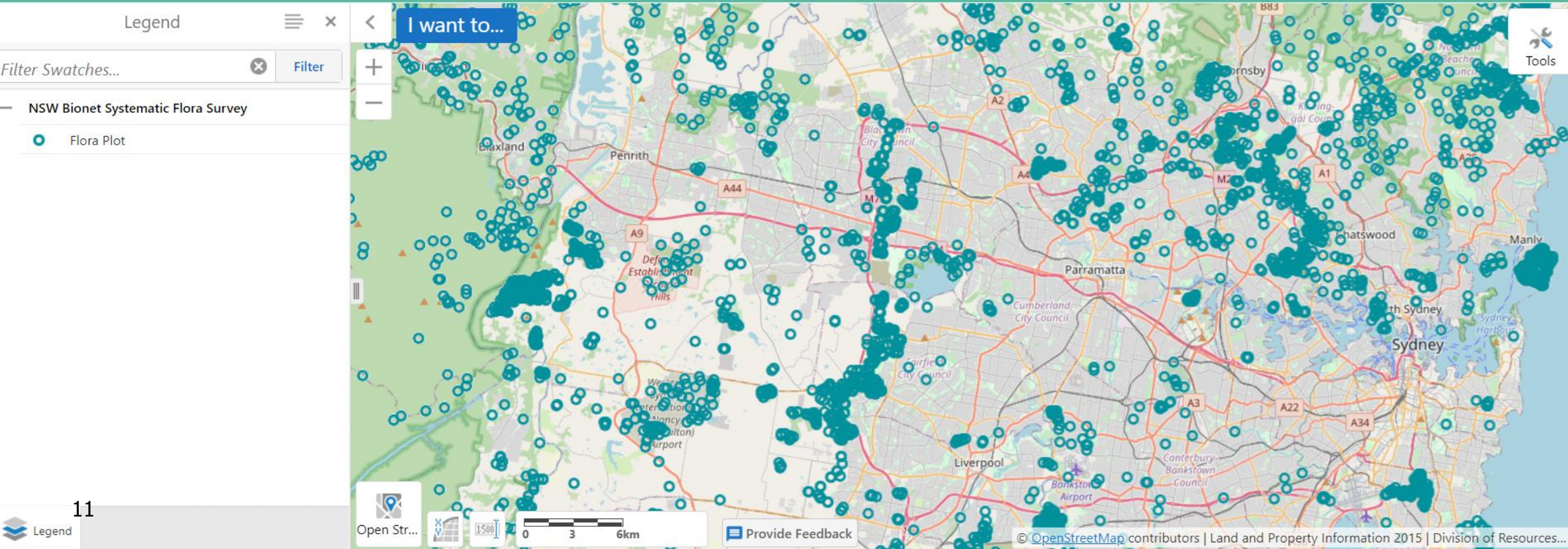


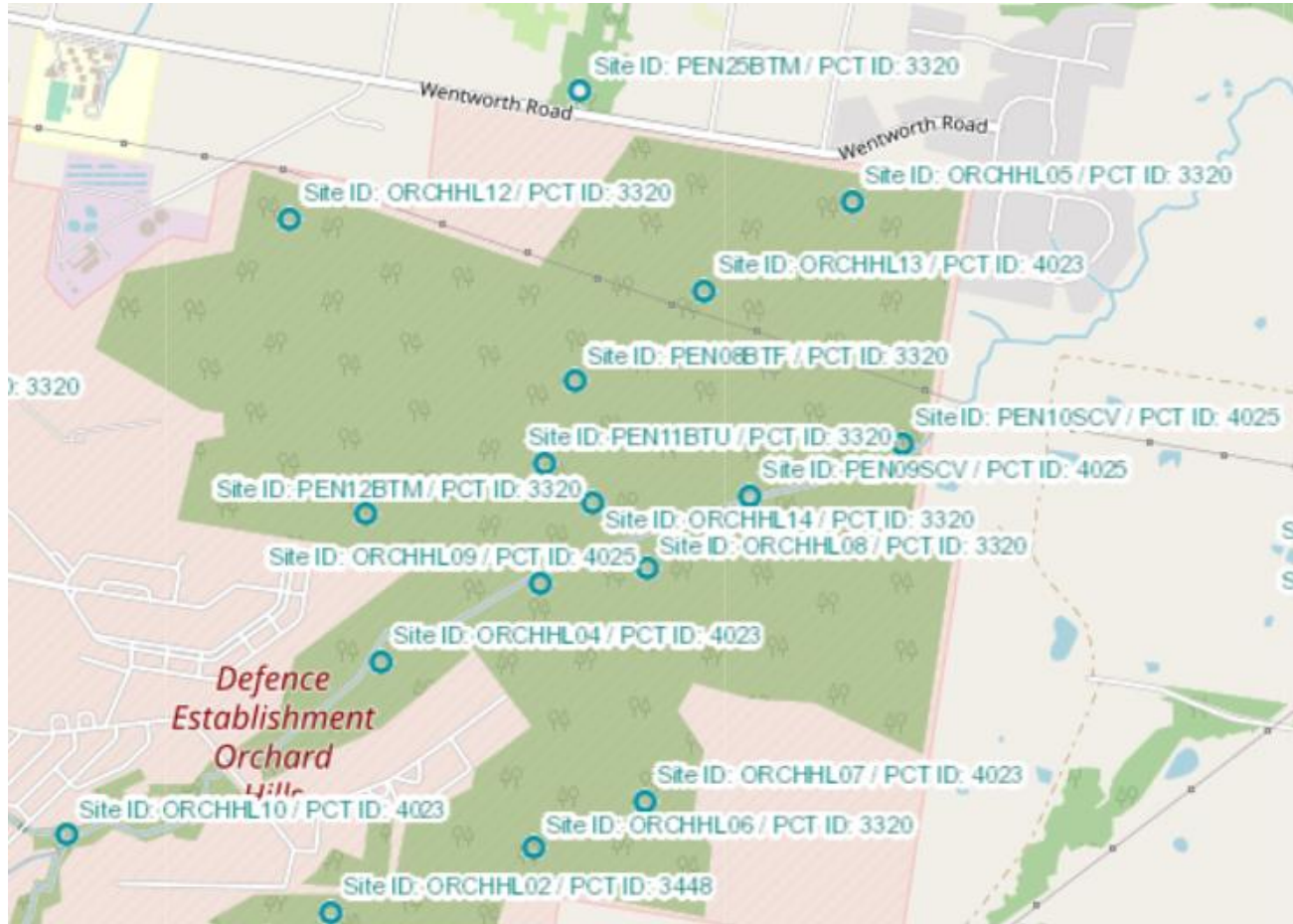
Current extent



SEED
The Central Resource for
Sharing and Enabling Environmental Data in NSW

[Dataset catalogue](#) [Need help?](#)





Access now

- SEED map viewer
- SEED arcgis Rest Service
- BioNet Atlas

New On-line PCT Assignment Tool

- Uses standard BAM plot based survey data
- BioNet > Tool Export Function
- Quickly offers best fitting PCT choices based on your field data
- Immediate access to PCT descriptions
- Species and growth form data
- PCT reference plot locations compared to your new location

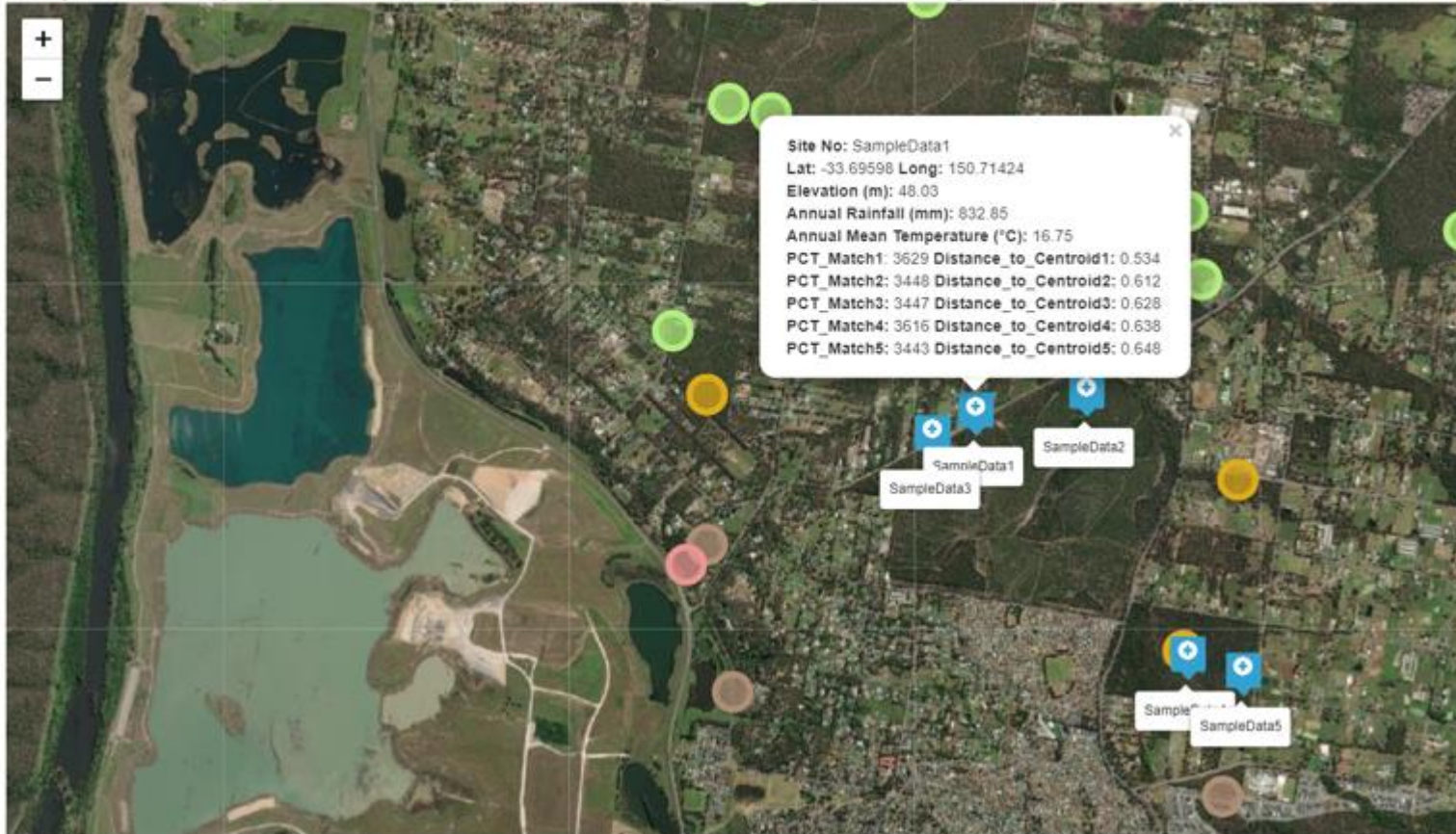
CENTROID MATCHES

ENVIRONMENTAL THRESHOLDS

MAP VIEW

Displayed are: publicly available sites drawn from the Flora surveys module of the BioNet Atlas application that are classified to a quantitative PCT, sites uploaded to BioNet but not visible here include: recently collected sites, sites that are not publicly available, sites not classified to a quantitative PCT, data development of PCTs.

PCT symbols on the map may be difficult to see against the 'Terrain' background. Selecting 'Satellite' background may make some symbols easier to see.



Pre-release data package

Pre-release v1.1.0	Constraints	Format
State Vegetation Type Map (Class/Formation/ PCT)	<ul style="list-style-type: none"> • Eastern NSW • 5m grid resolution • Not Pre-1750 	GIS Data Package
Plant Community Type Classification	<ul style="list-style-type: none"> • Eastern NSW • All fields except PCT% Cleared and PCT Lineage 	Spreadsheet
Threatened Biodiversity (TSp & TECs) to PCT Associations	<ul style="list-style-type: none"> • Eastern NSW 	Spreadsheet
Flora Survey Plot – PCT allocations	<ul style="list-style-type: none"> • Eastern NSW 	Spreadsheet (and via BioNet Atlas or SEED)

Pre-release data package

Pre-release v1.1.0	Constraints	Format
Plot to PCT Allocation Tool	<ul style="list-style-type: none">• Eastern NSW	Package containing: <ul style="list-style-type: none">• How to video• User Guide• Online application link

Pre-release data access



Data available from **15 September 2021**

Conditions of use

- The PCT classification in this data product has not yet been approved for use in government planning system such as the BOS and is not available for use in the BAM Calculator
- The data should not be used to estimate offset requirements for proposed developments
- The data may not be used for the basis for statutory or legal undertakings
- The data may not be copied, reproduced or published



Staying informed

Integrated BioNet Vegetation Data page

<https://environment.nsw.gov.au/topics/animals-and-plants/biodiversity/nsw-bionet/integrated-bionet-vegetation-data-program>

(link off the NSW BioNet home page)

Feedback

[Email: BioNet@environment.nsw.gov.au](mailto:BioNet@environment.nsw.gov.au)

Overview

1. Proposed transitional arrangements for BAM Assessments
2. What do the changes mean for the BOS?
3. How will Ecosystems credits based on new Eastern PCTs be introduced into the BOS?



Summary of transitional arrangements for the BOS

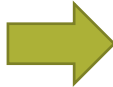
- 4-6 month delay after official release of the data
- During 6 month delay - public can test the changes
- In progress assessments – opt to continue on legacy data
- New assessments – new data
- BAM-C credit reports will list both legacy and new Eastern NSW PCTs
- Existing credits or obligations will not be extinguished/replaced or require an equivalency
- For past assessments - PCT lookup tool will display updated like for like PCTs for Ecosystem credits generated from legacy PCTs or new Eastern NSW.

NSW GOVERNMENT		BAM Biodiversity Credit Report (Like for like)				
57-Belah/Black Oak - Western Rosewood - Wilga woodland of central NSW including the Cobar Peneplain Bioregion	Like-for-like credit retirement options					
	Class	Trading group	Zone	HBT	Credits	IBRA region
	Semi-arid Sand Plain Woodlands This includes PCT's: 57, 58, 59, 221, 252	Semi-arid Sand Plain Woodlands <50%	57_Moderate	Yes		5 Darling Depression, Barnato Downs, Lachlan, Lachlan Plains, Menindee, Murrumbidgee, Nymagee, South Oлары Plain and Wilcannia Plains. or Any IBRA subregion that is within 100 kilometers of the outer edge of the impacted site.
82-Western Grey Box - Poplar Box - White Cypress Pine tall woodland on red loams mainly of the eastern Cobar Peneplain Bioregion	Like-for-like credit retirement options					
	Class	Trading group	Zone	HBT	Credits	IBRA region
	Floodplain Transition Woodlands This includes PCT's: 56, 74, 76, 80, 81, 82, 237, 244, 248, 251, 628	Floodplain Transition Woodlands >=70% and <90%	82_Moderate	Yes		7 Darling Depression, Barnato Downs, Lachlan, Lachlan Plains, Menindee, Murrumbidgee, Nymagee, South Oлары Plain and Wilcannia Plains. or Any IBRA subregion that is within 100 kilometers of the outer edge of the impacted site.
Assessment Id		Proposal Name			Page 3 of 6	

What do the changes mean for the BOS?

- BAM Assessment changes
 - New PCT selections – underpin the BAM assessment outcomes
 - New diagnostic tools to support and justify PCT selections
 - New % cleared value influences biodiversity risk weightings
 - updated threatened species associations – TS candidates
 - like for like credit report will start to list eligible legacy and new PCTs as offset obligations
- Approved credits or obligations – no revisions
- Legally, Ecosystem credits or obligations remain valid:
 - Consent conditions remain valid – no equivalency required.
 - PCTs credits from legacy PCTs can continue to trade with one another **OR** PCTs from the Eastern NSW when the offset rules are met.

decommissioned
PCT in
assessments



Biodiversity
credit from a
decommissioned
PCT



Keep going until
traded and
retired..



How will new PCT credits will be introduced into existing offset trading groups – Example - offset obligation

- TEC Ecosystem credits - no new TEC credit types (unless new TECs listed by the TSSC)
- Species credits – no new species credit types
- **Non-TEC Ecosystem credits – new PCT credits incorporated into existing offset trading groups**

PCT credit obligation: 1209 – Spotted gum – Grey Box – Grey Ironbark dry open forest of the Clarence Valley lowlands of the NSW North Coast Bioregion

Offset Trading Group: Clarence Dry Sclerophyll Forests less than 50% (cleared)

1	2	3
Like for like credit retirement options (legacy PCTs)	Like for like credit retirement options (Eastern NSW PCTs)	Like for like credit retirement options
1209, 819, 852, 857, 861, 867, 1062, 1091, 1205, 1209, 1210, 1211, 1221, 1333	3417, 3418, 3420, 3421, 3422, 3424, 3425, 3426, 3427, 3428, 4118	1209, 819, 852, 857, 861, 867, 1062, 1091, 1205, 1209, 1210 1211, 1221, 1333 AND 3417, 3418, 3420, 3421, 3422, 3424, 3425, 3426, 3427, 3428, 4118