



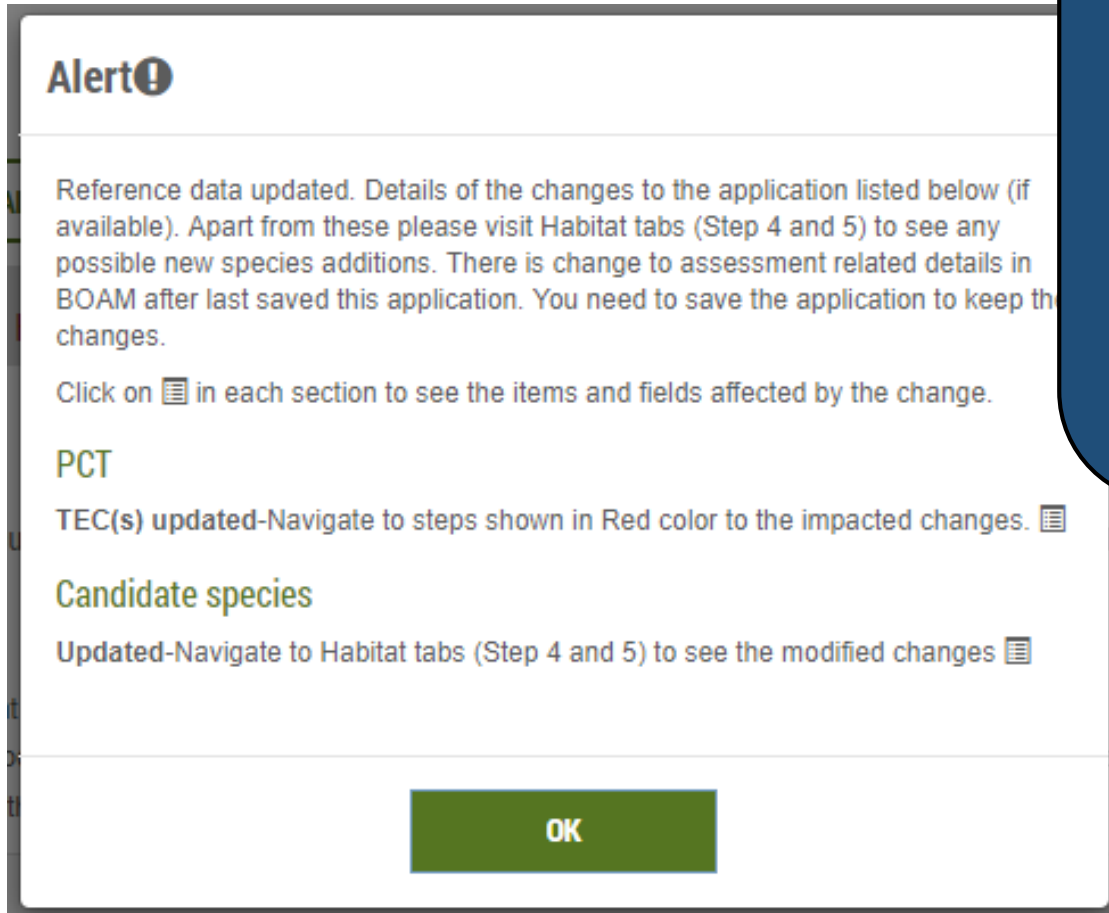
Planning,
Industry &
Environment


Release notes - Updates to the BAM Calculator (BAM-C) data, September 2019

Information for Accredited Assessors


Alert: Opening an existing case

When an assessor opens an in-progress case for the first time after the updated data is imported into the BAM-C, you will most likely receive an alert indicating that the reference data has been updated. The message received depends on if, and which, species data have been impacted by the import. The alert will look something like this.




Alert 


Reference data updated. Details of the changes to the application listed below (if available). Apart from these please visit Habitat tabs (Step 4 and 5) to see any possible new species additions. There is change to assessment related details in BOAM after last saved this application. You need to save the application to keep the changes.

Click on  in each section to see the items and fields affected by the change.

PCT

TEC(s) updated-Navigate to steps shown in Red color to the impacted changes. 

Candidate species

Updated-Navigate to Habitat tabs (Step 4 and 5) to see the modified changes 

OK



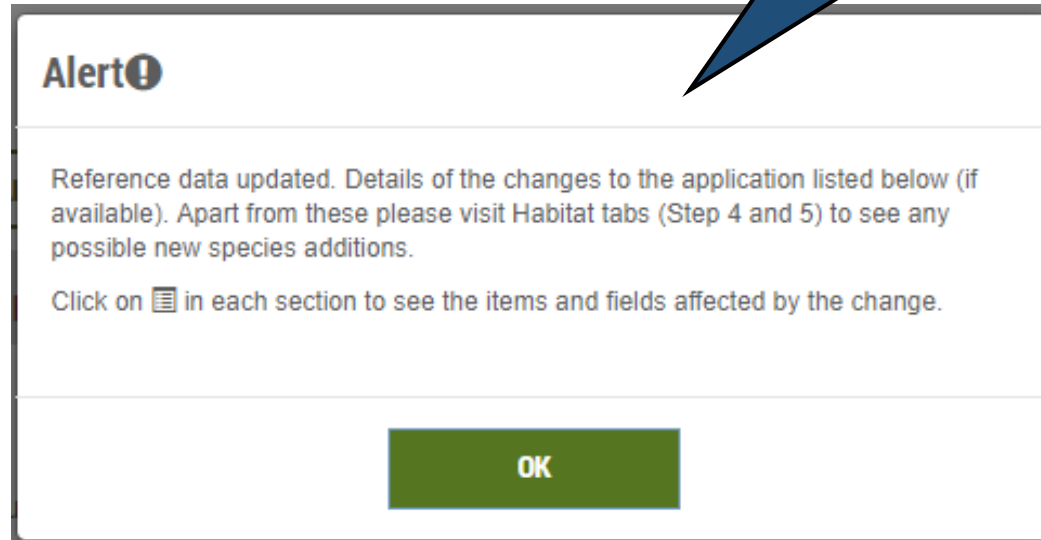
Planning,
Industry &
Environment

Scenario 1: Case not impacted

When no existing species have been impacted by the data import, you will still receive an alert, but there will be no details in the alert.

Note that species added to the case, either newly listed or as a result of modifications to PCT/IBRA subregion associations, will NOT display in the alert – the alert will only display updated data changes.

The alert will either look like this – general alert with no details.



Alert

Or this – blank.

OK

Not impacted: Tabs 4 and 5

Even if your case has not been updated with new data, tab 4: Habitat suitability and tab 5: Habitat survey will still be displayed in red text.

Note that added or newly listed species may have populated the predicted or candidate threatened species lists, but will not be displayed in the initial alert. You will need to check and action if any new species have been added. Added species will be flagged with a star next to their name.



Planning,
Industry &
Environment

You will need to click 'Next' at the bottom of each tab to enable the case to be finalised at a later date, even if you have made no edits.




Remember
to click
'Next'

Scenario 2: Case impacted


Click on the tables next to each category to display the species or TECs impacted. Note that species added to the case, either newly listed or as a result of modifications to PCT/IBRA subregion associations, will not display in the alert – the alert only displays updated data changes.

Alert!

Reference data updated. Details of the changes to the application listed below (if available). Apart from these please visit Habitat tabs (Step 4 and 5) to see any possible new species additions. There is change to assessment related details in BOAM after last saved this application. You need to save the application to keep the changes.

Click on  in each section to see the items and fields affected by the change.

PCT

TEC(s) updated-Navigate to steps shown in Red color to the impacted changes. 

Candidate species

Updated-Navigate to Habitat tabs (Step 4 and 5) to see the modified changes 

OK

When existing species have been impacted by the data import, you will receive an alert with further information.

Alert!

Reference data updated. Details of the changes to the application listed below (if available). Apart from these please visit Habitat tabs (Step 4 and 5) to see any possible new species additions. There is change to assessment related details in BOAM after last saved this application. You need to save the application to keep the changes.

Click on  in each section to see the items and fields affected by the change.

PCT

TEC(s) updated-Navigate to steps shown in Red color to the impacted changes. ✕
1592- [SAIL,TEC name,]

Candidate species

Updated-Navigate to Habitat tabs (Step 4 and 5) to see the modified changes ✕

o Anthochaera phrygia-Regent Honeyeater- [SAIL,]

o Lathamus discolor-Swift Parrot- [SAIL,]

o Miniopterus australis-Little Bentwing-bat- [SAIL,]

o Miniopterus schreibersii oceanensis-Eastern Bentwing-bat- [SAIL,]

OK



Planning,
Industry &
Environment

Impacted: Tab 3: Vegetation

Remember to click 'Next'

Alert

Reference data updated. Details of the changes to the application listed below (if available). Apart from these please visit Habitat tabs (Step 4 and 5) to see any possible new species additions. There is change to assessment related details in BOAM after last saved this application. You need to save the application to keep the changes.

Click on in each section to see the items and fields affected by the change.

PCT

TEC(s) updated-Navigate to steps shown in Red color to the impacted changes.

1619- [Invalid TEC,]

OK

Where a TEC or PCT has been updated or decommissioned, the alert will list the TEC or PCT impacted.

Plant community types (PCT) & ecological communities

Formation *	Class *	Plant community type *	PCT % cleared	Assoc
Dry Sclerophyll Forests (Shrubby sub-formation)	Sydney Coastal Dry Sclerophyll Forests	1619 - Smooth-barked Apple - Red Bloodwood - Brown Stringybark - Hairpin Banksia healthy open forest of coastal lowlands Invalid PCT! Please update.	45	Not a TEC

SEARCH PCT OUTSIDE IBRA

IMPORT SITE

Vegetation zones (Current vegetation integrity score)

#	Import	PCT code	Condition class *	Vegetation zone name	Patch Size*	Area (ha)*	Lo
1		1619	Dummy	1619_Dummy	101	2.4	



Where a PCT has been decommissioned the PCT will display with an 'Invalid' alert. You will need to delete the PCT and identify a suitable replacement PCT.

The vegetation zone data will not be deleted, meaning that the new PCT code can be added to the existing data.

Impacted: Tab 4: Habitat suitability

Alert

Reference data updated. Details of the changes to the application listed below (if available). Apart from these please visit Habitat tabs (Step 4 and 5) to see any possible new species additions.

Click on in each section to see the items and fields affected by the change.

Candidate species

Updated-Navigate to Habitat tabs (Step 4 and 5) to see the modified changes

- Eucalyptus aggregata-Black Gum- [Geographic limitations,]
- Genoplesium baueri-Bauer's Midge Orchid- [Geographic limitations,]
- Pterostylis ventricosa-Pterostylis ventricosa- [Geographic limitations,]
- Zieria murphyi-Velvet Zieria- [Geographic limitations,]

Any newly added species will display a star next to their name (indicating it is unassessed), however they will NOT have been listed as updated in the initial alert. Any species that have been assessed previously will not display a star.

Species with updated data include any change to data such as new text in the General Notes field of the TBDC, modification to survey months, or SAIL status. You will need to determine if these changes affect your assessment. You will have to confirm that the information you have entered meet any new requirements before progressing.



Candidate threatened species (Species credits)

Species	Habitat constraints	Habitat degraded	Geographic limitations	Species is vagrant
<i>Eucalyptus aggregata</i> Black Gum	--		--	<input type="checkbox"/>
<i>Genoplesium baueri</i> Bauer's Midge Orchid	--	<input type="checkbox"/>	--	<input type="checkbox"/>
<i>Grevillea parviflora subsp. parviflora</i> Small-flower Grevillea	--	<input type="checkbox"/>	--	<input type="checkbox"/>
★ <i>Grevillea raybrownii</i> Grevillea raybrownii			<input checked="" type="checkbox"/> N	<input type="checkbox"/>

Existing species with data updates.

Newly listed species.

Remember to click 'Next'

Impacted: Tab 5: Habitat survey

Remember to click 'Next'

Candidate threatened species (Species credits)

Species	Species presence	Survey timetable	UOM	Veg Zone & Val
<i>Acacia flocktoniae</i> Flockton Wattle	No (surveyed)	<input checked="" type="checkbox"/> Jan <input type="checkbox"/> Feb <input type="checkbox"/> Mar <input type="checkbox"/> Apr <input type="checkbox"/> May <input type="checkbox"/> Jun <input type="checkbox"/> Jul <input type="checkbox"/> Aug <input type="checkbox"/> Sep <input type="checkbox"/> Oct <input type="checkbox"/> Nov	Area (ha)	<input checked="" type="checkbox"/> 1155_good 1.2

Original month surveyed, prior to data import.

Alert

Reference data updated. Details of the changes to the application listed below (if available). Apart from these please visit Habitat tabs (Step 4 and 5) to see any possible new species additions.

Click on in each section to see the items and fields affected by the update.

Candidate species

[Updated - Navigate to Habitat tabs \(Step 4 and 5\) to see the](#)

Acacia flocktoniae-Flockton Wattle- [*Sensitivity to gain class Concern, Offset Multiplier, Months of survey.*]

OK



Candidate threatened species (Species credits)

Species	Species presence	Survey timetable	UOM	Veg Zone & Value
<i>Acacia flocktoniae</i> Flockton Wattle	Yes (surveyed)	<input type="checkbox"/> Jan <input type="checkbox"/> Feb <input type="checkbox"/> Mar <input type="checkbox"/> Apr <input type="checkbox"/> May <input type="checkbox"/> Jun <input checked="" type="checkbox"/> Jul <input type="checkbox"/> Aug <input type="checkbox"/> Sep <input type="checkbox"/> Oct <input type="checkbox"/> Nov <input type="checkbox"/> Dec	Area (ha)	<input checked="" type="checkbox"/> 1155_good

When the data update removes the survey month of the original survey, the case will have no month selected. You will be required to re-survey during the updated months unless you can justify in your BAR that the survey was undertaken in a month likely to detect the species, in which case you will need to tick the 'Survey months outside the specified months' box and select the appropriate month.

This species is newly listed and added, so a star is displayed next to the name, as it has not yet been assessed.

<input checked="" type="checkbox"/> <i>Grevillea raybrownii</i> Grevillea raybrownii	Yes (surveyed)	<input type="checkbox"/> Jan <input type="checkbox"/> Feb <input type="checkbox"/> Mar <input type="checkbox"/> Apr <input type="checkbox"/> May <input type="checkbox"/> Jun <input type="checkbox"/> Jul <input type="checkbox"/> Aug <input type="checkbox"/> Sep <input type="checkbox"/> Oct <input type="checkbox"/> Nov <input type="checkbox"/> Dec
---	----------------	---

Impacts to credit calculations: Addition or removal of species

Species may automatically be added to an existing case if:

- The species is newly listed and is associated with your IBRA subregion and PCT(s);
- The PCT associations for a species are updated to include the PCT(s) in your case (and the species is already associated with your IBRA subregion);
- The IBRA subregion associations for a species are updated to include the subregion in your case (and the species is already associated with the PCT(s) in your case).

These newly added species will not display in the alert, but will display a star next to their names in tabs 4 and 5.

Species may also be automatically removed from an existing case if:

- The PCT associations for a species are updated to remove the PCT(s) in your case;
- The IBRA subregion associations for a species are updated to remove the subregion in your case.

Note that if you have previously identified one of these removed species as being on the assessment site you will need to search for, and add, the species back into the predicted or candidate species list (depending on whether the species is an ecosystem credit species or species credit species).

Remember
to click
'Next'



Planning,
Industry &
Environment

Impacts to credit calculations: Biodiversity risk weighting

Updates to the data that calculates the biodiversity risk weighting (BRW) score (sensitivity to gain and sensitivity to loss), also known as the offset multiplier, may impact the BRW score. This will result in a change to the credit calculations for candidate species. Species with an updated BRW score will display in the alert.



Planning,
Industry &
Environment

Alert!

Reference data updated. Details of the changes to the application listed below (if available). Apart from these please visit Habitat tabs (Step 4 and 5) to see any possible new species additions.

Click on in each section to see the items and fields affected by the change.

Candidate species

Updated-Navigate to Habitat tabs (Step 4 and 5) to see the modified changes

Acacia flocktoniae-Flockton Wattle- [*Sensitivity to gain class, Level of Biodiversity Concern, Offset Multiplier, Months of survey,*]

Before update.

Vegetation zone name	Habitat condition (vegetation integrity) loss	Area / Count	Biodiversity risk weighting	Potential SAIL	Species credits
Acacia flocktoniae / Flockton Wattle (Flora)					
1150_good	42.9	1.2 hectares	1.5	False	19
					Subtotal: 19

After update.


Vegetation zone name	Habitat condition (vegetation integrity) loss	Area / Count	Biodiversity risk weighting	Potential SAIL	Species credits
Acacia flocktoniae / Flockton Wattle (Flora)					
1150_good	42.9	1.2 hectares	2	False	26
					Subtotal: 26

Impacts to credit calculations: Unit of measure

When the unit of measure for a candidate species is changed from 'count of individuals' to 'area' or visa versa, this will likely impact the number of credits generated for the species.

Alert!

Reference data updated. Details of the changes to the application are available in the Reference Data tab (Step 4 and 5). Apart from these please visit Habitat tabs (Step 4 and 5) to see the possible new species additions.

Click on  in each section to see the items and fields affected

Candidate species

Updated - Navigate to Habitat tabs (Step 4 and 5) to see the modified changes ✕

Bulbophyllum globuliforme-Hoop Pine Orchid - [Unit of measure,]

Before update – assessment with 5 individuals.

Species credits for threatened species

Vegetation zone name	Habitat condition (vegetation integrity) loss	Area / Count	Biodiversity risk weighting	Potential SAIL	Species credits
Bulbophyllum globuliforme / Hoop Pine Orchid (Flora)		5 individuals	3.00	True	15

After the update, the unit of measure type displayed on tab 5 will have updated, but you will need to update the new unit of measure value.

UOM	Veg Zone & Value	UOM	Veg Zone & Value
Area (ha)	<input checked="" type="checkbox"/> 1130_good * 5	Area (ha)	<input checked="" type="checkbox"/> 1130_good 0.5

After update – assessment with 0.5 ha.

Species credits for threatened species

Vegetation zone name	Habitat condition (vegetation integrity) loss	Area / Count	Biodiversity risk weighting	Potential SAIL	Species credits
Bulbophyllum globuliforme / Hoop Pine Orchid (Flora)		0.5 hectares	3	True	19
1130_good	49.4				



Remember to click 'Next'

Impacts to credit calculations: Serious and irreversible impacts (SAII)

The addition to, or removal from, the list of entities at risk of SAII will impact credit calculations. You may need to update your BAR to address the assessment criteria in section 10.2 of the BAM for any entities at risk of a SAII that are now included in your case.

The list of entities at risk of a SAII will no longer be embedded in the '*Guidance to assist a decision-maker to determine a serious and irreversible impact*'.

The list of these entities will be available from the DPIE website at <https://www.environment.nsw.gov.au/biodiversity/seriousirreversibleimpacts.htm>.



Planning,
Industry &
Environment

Ecological communities	Principle			
	1	2	3	4
Agnes Banks Woodland in the Sydney Basin Bioregion	√	√	√	
<u>Allocasuarina luehmannii</u> Woodland in the Riverina and Murray-Darling Depression Bioregions	√	√		
Araluen Scarp Grassy Forest in the South East Corner Bioregion			√	
Artesian Springs Ecological Community in the Great Artesian Basin		√	√	

Species (scientific name)	Species (common name)	Principle			
		1	2	3	4
<u>Acacia acronastes</u>	Pindari wattle			√	
<u>Acacia atrox</u>	Myall Creek wattle			√	
<u>Acacia chrysotricha</u>	Newry golden wattle			√	
<u>Acacia constablei</u>	Narrabarba wattle			√	
<u>Acacia courtii</u>	North Brother wattle			√	

