

# Biodiversity Offsets Scheme Update No. 26

18 March 2024

**Welcome to Issue No. 26 of the Biodiversity Offsets Scheme Update.**

This monthly newsletter is one of the ways in which we communicate and help support the implementation of the Biodiversity Offsets Scheme. You can keep up to date [via our website](#) and view our [past newsletters](#). The Biodiversity Conservation Trust's (BCT) twice-yearly newsletter is another source of information, which you can find on the BCT's [Publication website](#).

For other enquiries on the scheme, contact the dedicated scheme Help Desk team:

Help Desk Line 1800 931 717, staffed Tuesday to Thursday from 10 am to 4 pm

Help Desk mailbox, [BOS.helpdesk@environment.nsw.gov.au](mailto:BOS.helpdesk@environment.nsw.gov.au), monitored Monday to Friday from 10 am to 4 pm.

## **In this update**

### **For accredited assessors**

- New trust account type in BOAMS for accredited assessors

Updates to scheme online resources

- The new BOS website is now live
- The draft Native Vegetation Regulatory map release expanded to include Central West, Central Tablelands, North Coast and Northern Tablelands Local Land Services Regions

### **Upcoming training and information sessions**

- Local Government BOS training workshops - register now
- Ecological Monitoring Module for BSAs – Assessor training
- Accredited assessor training dates 2024
- Online forum: Management action costs

### **Biodiversity Assessment Method updates**

- Forest Owls changed to species credits 14 March 2024
- Updates to the TBDC and BAM-C
- Updated BAM-C User Guide now available
- Widely Cultivated Native Species added to BioNet

### **For credit owners and buyers**

- BSA update and variations
- Final reminder - Sell biodiversity credits to the BCT – the next Credit Tender opens 3 April 2024
- Credits Supply Fund Reverse Auction 5

### **Interested in establishing a BSA?**

- Stewardship Support Program open until 1 May 2024

## For accredited assessors

### **New trust account type in BOAMS for accredited assessors**

The department has added a new option for accredited assessors to create trust accounts and identify a case party as a trustee account in the Biodiversity Offsets and Agreement Management System (BOAMS). This is to differentiate trust accounts and to ensure that trust accounts can be appropriately recorded.

Trustees may act on behalf of a trust to enter into BSAs or be the proponent of a development application. Trustees can hold biodiversity credits on behalf of a trust.

To create a trust account:

- Click on the 'New Trust Account' button located on the bottom right-hand side of the home page
- Enter details for the trust into the fields and save this information by clicking 'Save'
- Upon saving, the page will redirect to a new screen confirming account creation. Click 'OK' to exit this page.

Trust accounts can be linked to corporation landholder and individual landholder case parties for the trustee:

- when adding these case parties, use the new drop-down field 'Is this case party a Trustee?' to select 'Yes' to indicate that the case party is a trustee

- link the case party to the associated trust account by entering the name of the trust into the field 'Trust'
- please note that trust accounts can only be linked to corporation landholder and individual landholder case parties.

The department may remediate existing accounts for trusts and trustees when an application to transfer or retire biodiversity credits is submitted.

Please contact the BOSCRECITS Mailbox [BOSCRECITS@environment.nsw.gov.au](mailto:BOSCRECITS@environment.nsw.gov.au) for help with creating trust accounts.

## Updates to scheme online resources

### The new BOS website is now live

Our website's structure, content and 'look and feel' has been redesigned to help make information easier for our users to find and understand.

Our pages are the first pages to move to the new Environment web platform. The entire Environment website will be migrated to the new platform later in 2024.

See the new pages here: [Biodiversity Offsets Scheme website](#)

Please send any feedback to: [BOS.helpdesk@environment.nsw.gov.au](mailto:BOS.helpdesk@environment.nsw.gov.au)

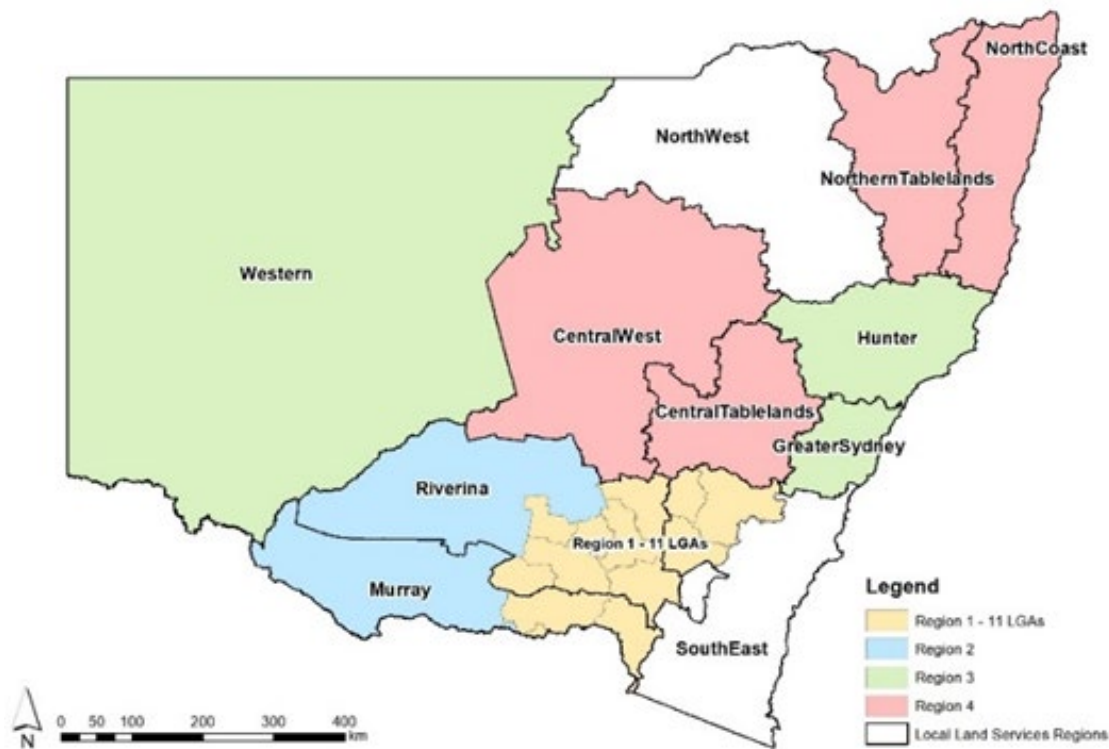
### The draft Native Vegetation Regulatory map release expanded to include Central West, Central Tablelands, North Coast and Northern Tablelands Local Land Services Regions

As part of the ongoing staged release of the draft Native Vegetation Regulatory (NVR) map, the department has expanded the released map areas. Published areas now include the whole of the Riverina, Murray, Wester, Hunter, Central West, Central Tablelands, North Coast, Northern Tablelands and parts of the South East Local Land Services regions.

The draft NVR map has now been released for 84.5% of the state.

The draft NVR map is a tool landholders can use to support land management decisions and provides an opportunity to review the accuracy of the map on their land before the map is finalised.

Free map reviews will continue to be available for all versions of NVR map.



Landholders with any enquiries about the map can submit an online enquiry form via the website, email [map.review@environment.nsw.gov.au](mailto:map.review@environment.nsw.gov.au) or call our staff on 1800 001 490.

For more information, go to the [NVR Map Webpage](#) or contact the [Map Review Team](#).

## Upcoming training and information sessions

### Local Government BOS training workshops - register now

The department is seeking Registrations of Interest (ROI) from local government staff who wish to attend the Biodiversity Offsets Scheme Local Government Workshops in May and June this year.

Register your interest as **early as possible** to secure a spot. Registrations are open until **30 March 2024**.

To register please complete this form: [Registration of Interest for Local Government training workshops](#).

There are 2 topics delivered over 2 full days which include **BDAR Review** and **Biodiversity Assessment and Approval Pathways**. The ROI process will be used to gauge demand for workshops and preferences for online or in person attendance.

To be eligible to attend the workshops, Council staff must have either:

- completed the [BOS Local Government eLearning Modules](#)
- attended BOS Local Government Approvers Training (2017-2018)
- attended training delivered by the Biodiversity Reform Regional Support Officer Roles (2018-2019)
- have one or more years of experience in the scheme
- completed accredited assessor training.

Staff who have completed the eLearning modules are automatically eligible. Staff who wish to enrol without completing the eLearning modules must request eligibility by outlining their equivalent training and experience in the [ROI form](#).

The department is offering sponsored enrolments for eLearning modules. To apply for a sponsored enrolment, complete the expression of interest form on the [Greencap BOS training page](#) and return to the BOS Help Desk: [boshelpdesk@environment.nsw.gov.au](mailto:boshelpdesk@environment.nsw.gov.au).

## Ecological Monitoring Module for BSAs – Assessor training

It has been more than 12 months since the last Accredited Assessor Ecological Monitoring Module (EMM) training sessions. The BCT is seeking feedback from the Accredited Assessor community to gauge interest in running future training/refresher sessions. The proposed sessions would likely include:

- developing BSA monitoring plans and associated TFD consistent with the EMM
- implementation of field survey methods
- data collection and management.

If you would like to express your interest in attending a training session, please email [james.brazillboast@bct.nsw.gov.au](mailto:james.brazillboast@bct.nsw.gov.au) with your name, number of interested participants (if representing an organisation), ideal timing (select from early April, late April or late May) and location (if in person). A fully online session may be the most appropriate.

## Accredited assessor training dates 2024

Dates for accredited assessor training for 2024 have been set.

Renewal training (online) has been set for the following dates:

- 1 July to 2 July
- 26 August to 27 August
- 23 September to 24 September
- 21 October to 22 October

Main training (online and field day) has been set for the following dates:

- 15 July to 19 July
- 25 November (TBA)

For further information on accredited assessor training, please access the website.

## Online forum: Management action costs

Join the Credit Supply Taskforce's John Seidel, Director Negotiation and Delivery, and Max Massa, A/Senior Project Officer, to discuss work underway by the Taskforce to benchmark management action costs – such as, fencing, weed management, pest control, track/trail maintenance and monitoring. There will be a presentation from both speakers, followed by a Q&A and discussion session for participants.

The forum will be held Thursday 21 March 2024 | 2.00 pm to 3.00 pm.

### Register for the online forum for accredited assessors

The forum will be recorded for those unable to attend. If you have any questions before the webinar, please submit them to [Stewardship@environment.nsw.gov.au](mailto:Stewardship@environment.nsw.gov.au).

# Biodiversity Assessment Method updates

## Forest Owls changed to species credits 14 March 2024

Changes for the masked owl (*Tyto novaehollandiae*), sooty owl (*Tyto tenebricosa*) powerful owl (*Ninox strenua*) and barking owl (*Ninox connivens*) were brought into the BAM-Calculator (BAM-C) on **14 March 2024**.

Assessments must now apply the revised credit class, survey and credit generation approaches for the owls published in the BioNet threatened biodiversity data collection. In-progress BAM-C cases will automatically update with the changes when re-opened. Assessments that were finalised before 14 March, then re-opened, will also update with the changes.

The changes were outlined in the BOS Update No. 24 and 25 and include:

- change of the credit class from 'dual credit' to 'species credit,'
- change to the survey approach to detect the presence of owls within suitable habitat rather than detecting breeding birds
- change to how credits are calculated for the owls, by basing credit generation on vegetation zones containing appropriate hollow bearing trees (or for the sooty owl, containing hollows, caves or cliff lines/ledges) that are within 800 metres of the

location of a detected owl (in contrast to the current approach that relies on generating credits from individually identified breeding hollows).

Landholders with an existing biodiversity stewardship agreement (BSA) may be able to generate additional species credits for owls via a variation to the BSA. Contact [stewardship@environment.nsw.gov.au](mailto:stewardship@environment.nsw.gov.au) for advice.

## Updates to the TBDC and BAM-C

To minimise successive changes and disruption to assessments, the changes to the credit class for the threatened large forest owls were brought in at the same time as the regular TBDC BAM data import to the BAM-C.

The updates include:

- amendments to survey months and/or survey comments for some threatened species
- changes to some PCTs
- changes to some threatened species PCT associations
- changes to Interim Biogeographic Regionalisation for Australia (IBRA) subregion associations for a range of entities
- removal of N/A tick from habitat constraints where an alternate habitat constraint box is also ticked.

The updates may change assessment requirements and credit generation for some threatened entities. For more information, please see the [BAM-C release notes](#).

## Updated BAM-C User Guide now available

The user guide for the BAM-Calculator (BAM-C) has been significantly updated and is now [available for download](#). The updated guide includes step-by-step instructions to navigate and apply each module of the calculator. The updated user guide is also available on the Assessors Resources webpages and the landing page of the BAM-C.

## Widely Cultivated Native Species added to BioNet

To support BAM assessments using the planted native vegetation streamlined module, the BioNet species name database was recently updated to reflect if a species is on the widely cultivated native species list. Assessors and decision-makers can now refer to the operational manual 'Streamlined assessment module Planted Native Vegetation' or to the BioNet Species Name Database to identify if a species is considered widely cultivated under the BAM.

# For credit owners and buyers

## BSA update and variations

The Credits Supply Taskforce continues to increase the number of BSAs to improve the supply of in-demand biodiversity credits and support the conservation and restoration of threatened ecosystems and species.

As of 29 February 2024, the Taskforce had approved 36 new BSAs in the 2023-24 financial year covering 17,159 hectares. Since the Taskforce commenced in July 2022, a total of 77 new BSAs have been approved covering 39,105 hectares.

There are new arrangements for applications to vary BSAs. The Credits Supply Taskforce is now responsible for variations that propose creating new or additional credit types or adding new areas to the existing agreement. The BCT is responsible for BSA variations to update management plans or other changes that do not add new areas or credits to the BSA. The application form to vary a BSA is being updated to reflect these arrangements. In the interim, please contact the Taskforce at [stewardship@environment.nsw.gov.au](mailto:stewardship@environment.nsw.gov.au) for any assistance.

## Final reminder - Sell biodiversity credits to the BCT – the next Credit Tender opens 3 April 2024

Information on the [BCT Credit Tender 24-01](#) is available on the BCT website. From **Wednesday 3 April** until **Wednesday 24 April**, applicants can offer the BCT a selling price for their biodiversity credits. This opportunity will be available for hundreds of credit types across the state.

### Dates

- Updated Wanted Credits List available from the BCT's [Credit Offer Portal](#) on **Wednesday 27 March 2024**
- Tender opens to receive applications on **Wednesday 3 April 2024**
- All applications must be submitted by 11:59 pm **Wednesday 24 April 2024** using the BCT's [Credit Offer Portal](#).

Ensure you are eligible before applying

Twenty per cent of bids received for the last Tender were ineligible. To ensure your application is eligible, read the guidance for how to use the BCT's [Wanted Credits List](#). [Information for new landholders wanting to offer credits to the BCT is available.](#)



## Credits Supply Fund Reverse Auction 5

The fifth Reverse Auction for the Biodiversity Credits Supply Fund closed for bids on 6 March 2024. The 82 bids are now progressing to assessment. Results from the reverse auction will be published on the Supply Fund webpage on Wednesday 10 April 2024 and credits are expected to be available to purchase from May 2024. A summary of past reverse auctions is available in the [market update](#). More information can be found on the [Supply Fund webpage](#).

## Interested in establishing a BSA?

### Stewardship Support Program open until 1 May 2024

The Credits Supply Taskforce is pleased to announce that the [Stewardship Support Program](#) is **open for new applications for support through to 5 pm on 1 May 2024**. The program helps eligible landholders with biodiversity assessments and other support at no cost.

This program replaces the Stewardship Expression of Interest program, which closed for new EOIs in October 2023 following a very positive response from landholders all over New South Wales. These sites are continuing to progress with the assistance of the Taskforce.

Both programs are funded by the Supply Fund to increase the total number of in-demand credits available in the biodiversity market.

Environment and Heritage (EH)  
Department of Climate Change, Energy, the Environment and Water  
Locked Bag 5022, Parramatta NSW 2124; Phone: 1300 361 967 (EH enquiries);  
Email: [info@environment.nsw.gov.au](mailto:info@environment.nsw.gov.au); Website: [www.environment.nsw.gov.au](http://www.environment.nsw.gov.au)  
EH 2024/0108; April 2024.